



Port Panama City

Our Mission

Expand regional economic opportunities by providing modern port facilities, promoting trade, and supporting industrial development



THE

GULFCOAST

GATEWAY



Bay County Transportation Network

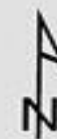


Legend

- Interstates
- Toll Roads
- US Roads
- State Roads
- County Roads
- Minor Roads
- Cities/Towns
- Urban Areas
- County Boundary
- Rivers
- Lake
- Swamp or Marsh

Produced in 2009 by the
Florida Center for Instructional Technology (FCIT)
using data from the
Florida Department of Transportation.

Projection: Albers Conical Equal Area



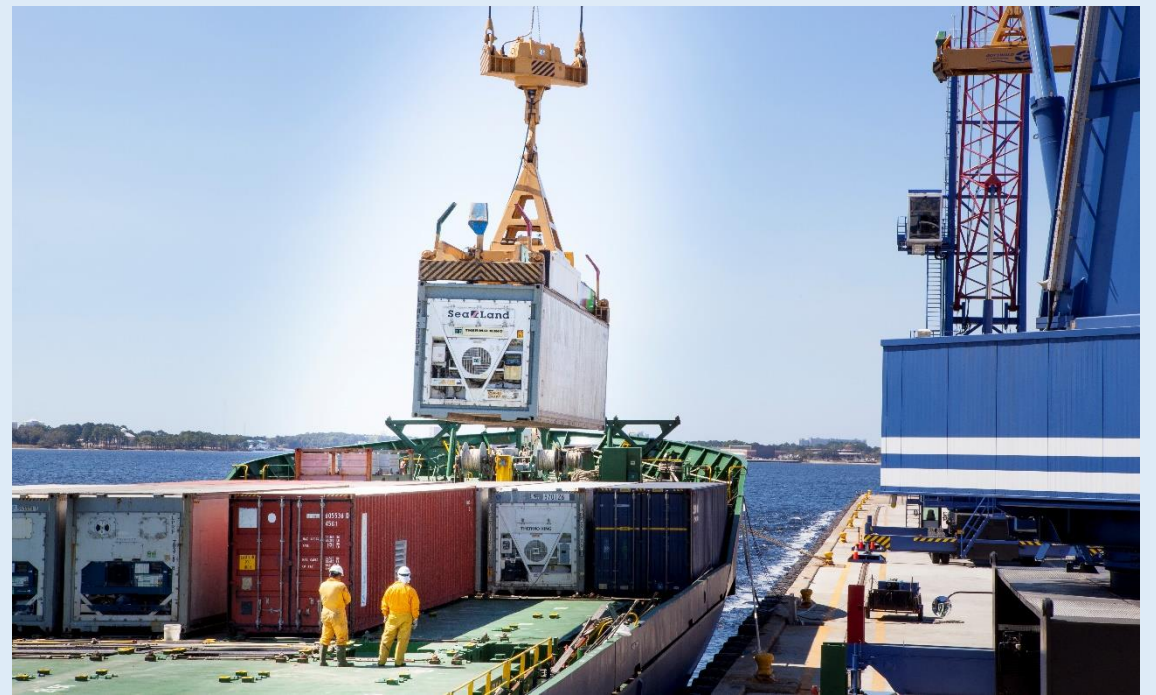
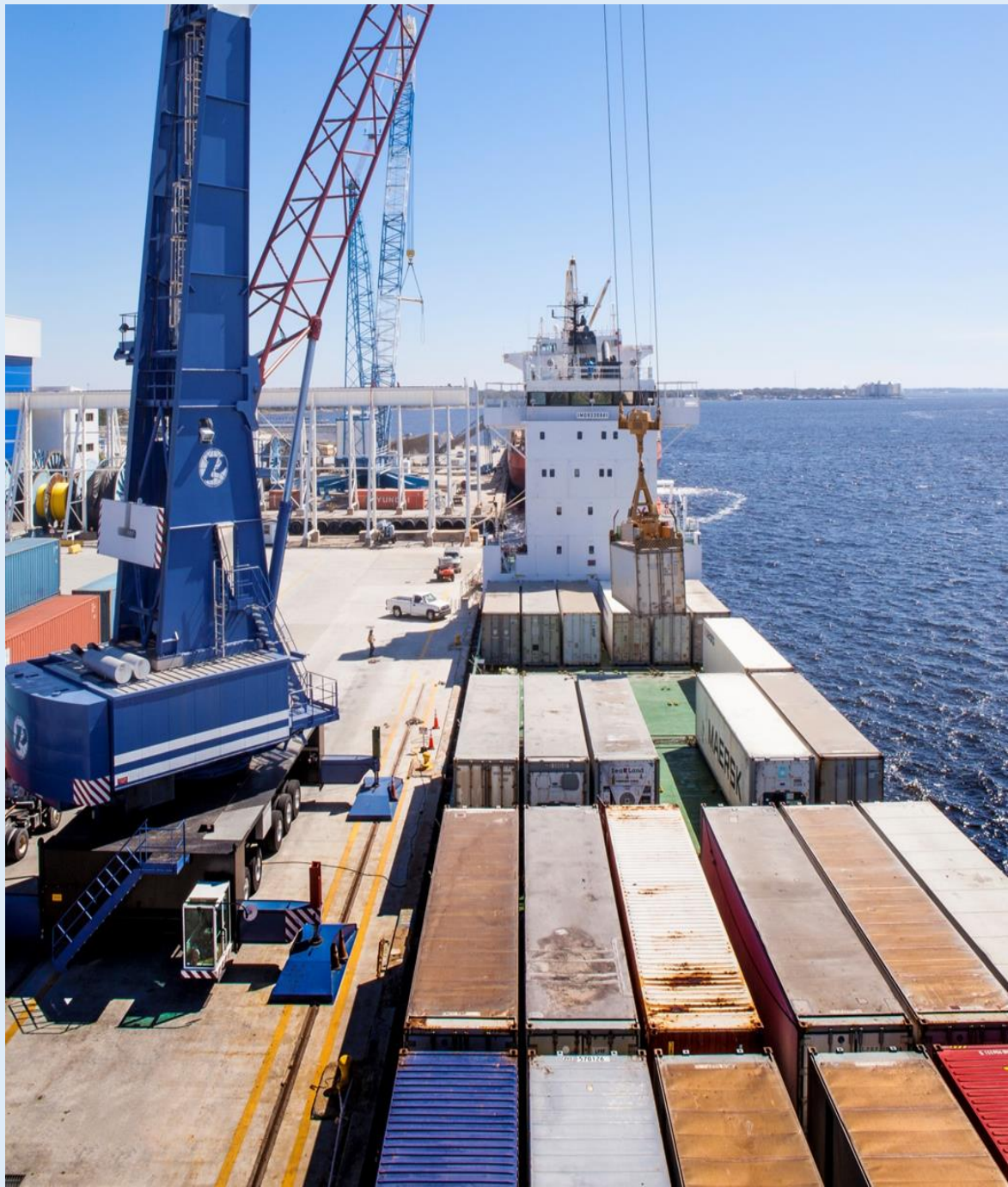
0 4 8
Miles















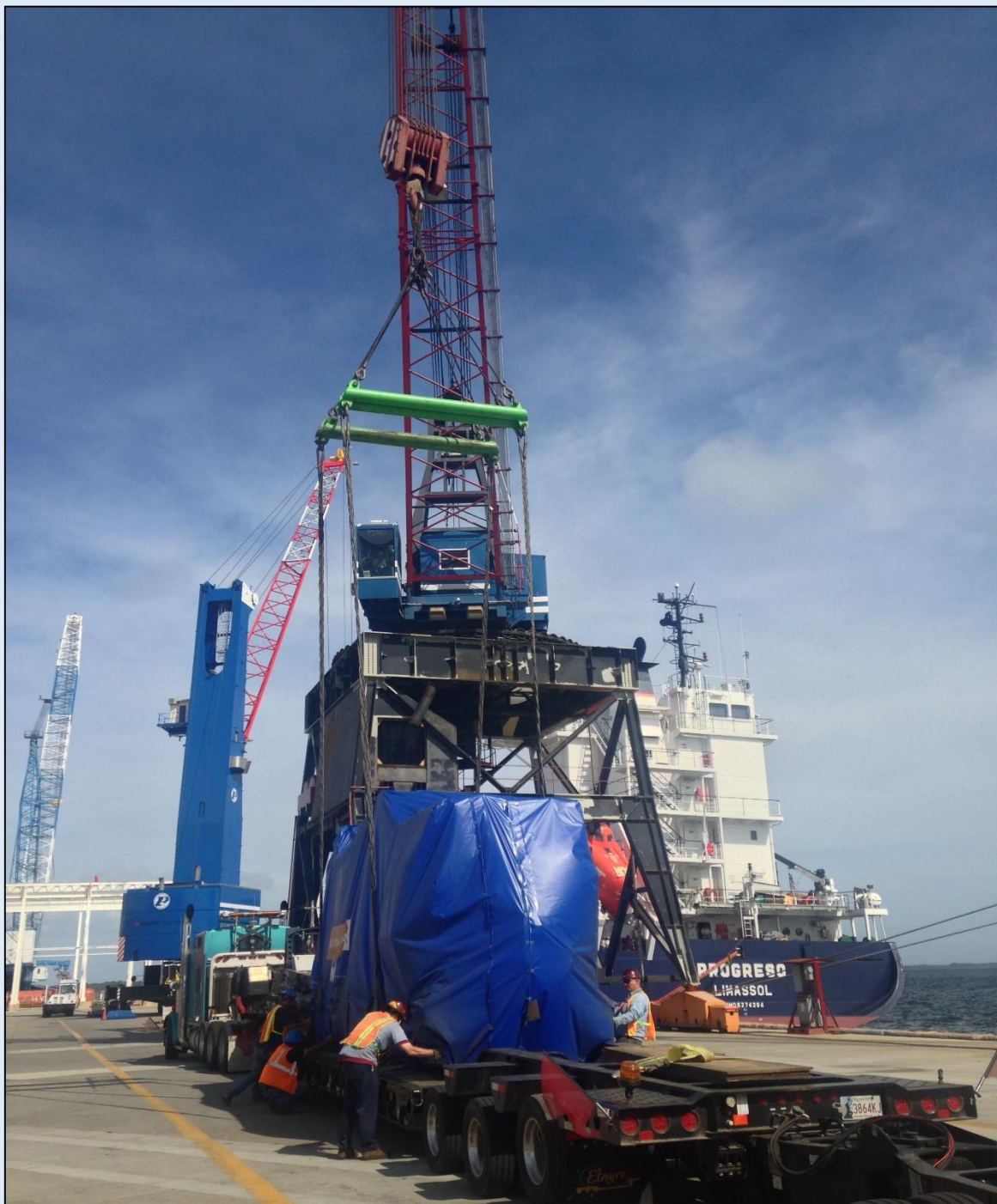
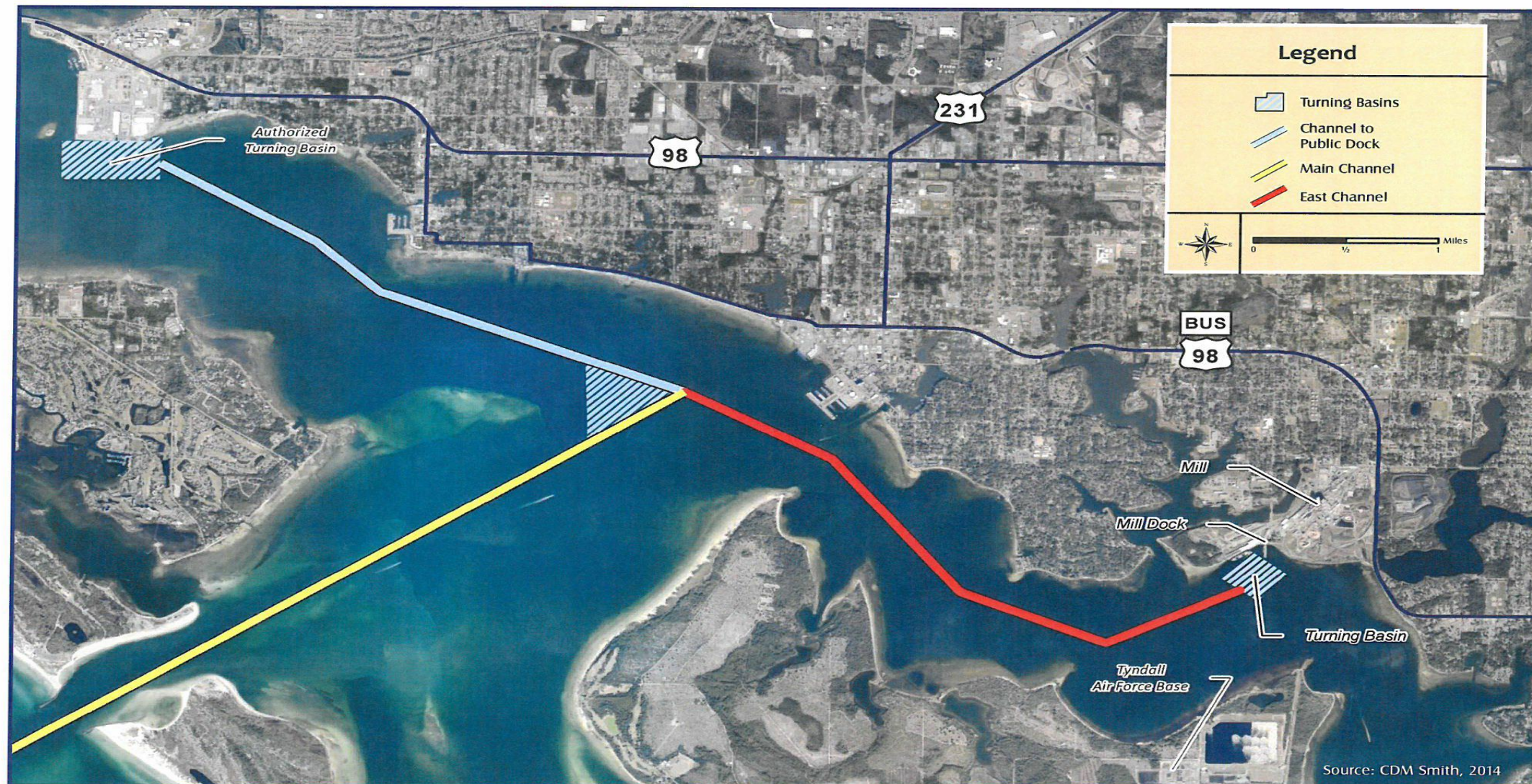


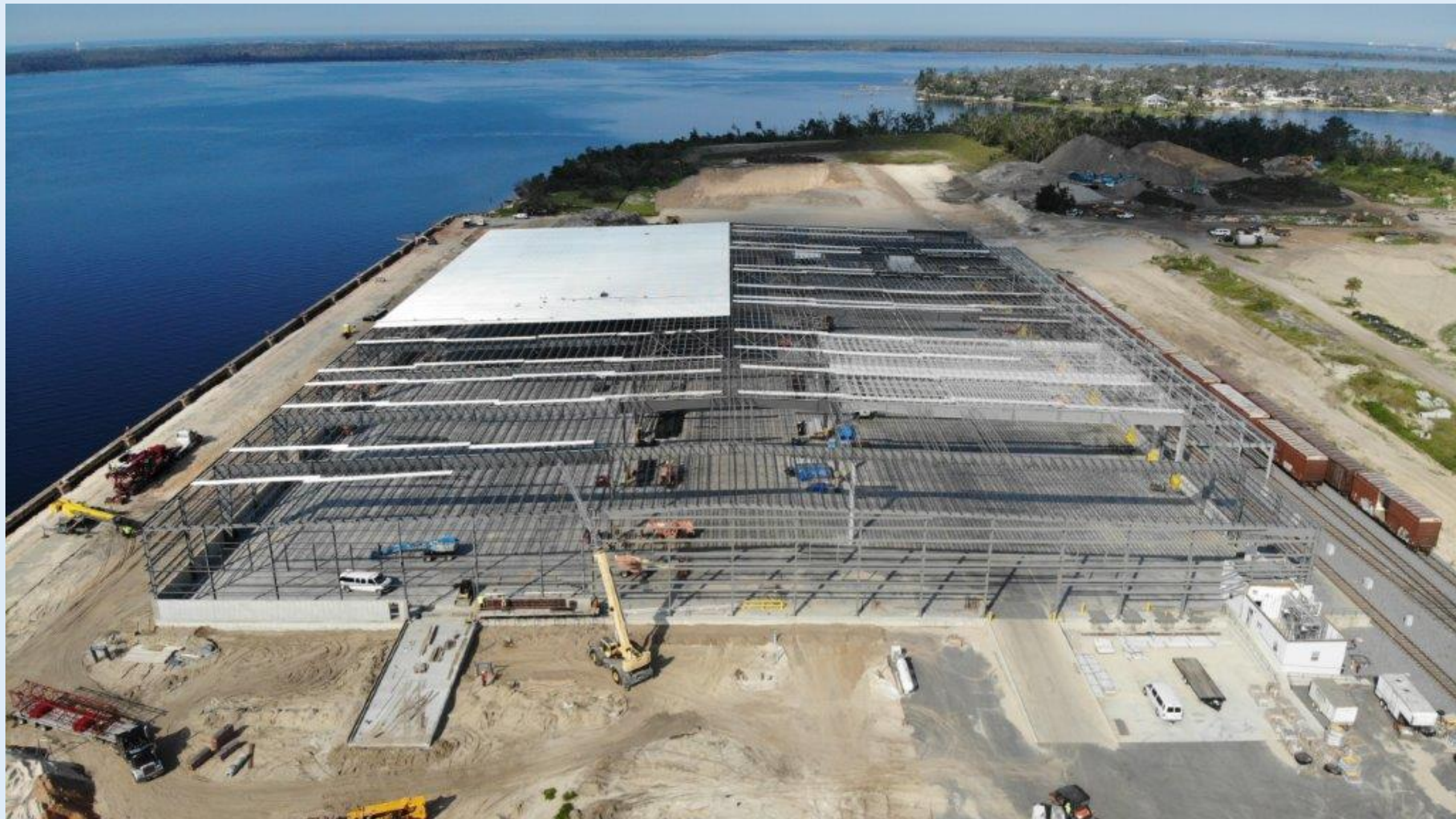


Figure IV-4

Port Panama City: St. Andrew Bay and East Bay Channel Map













Thank You